

QUICK GUIDE  
For Multi-Site Manager

---

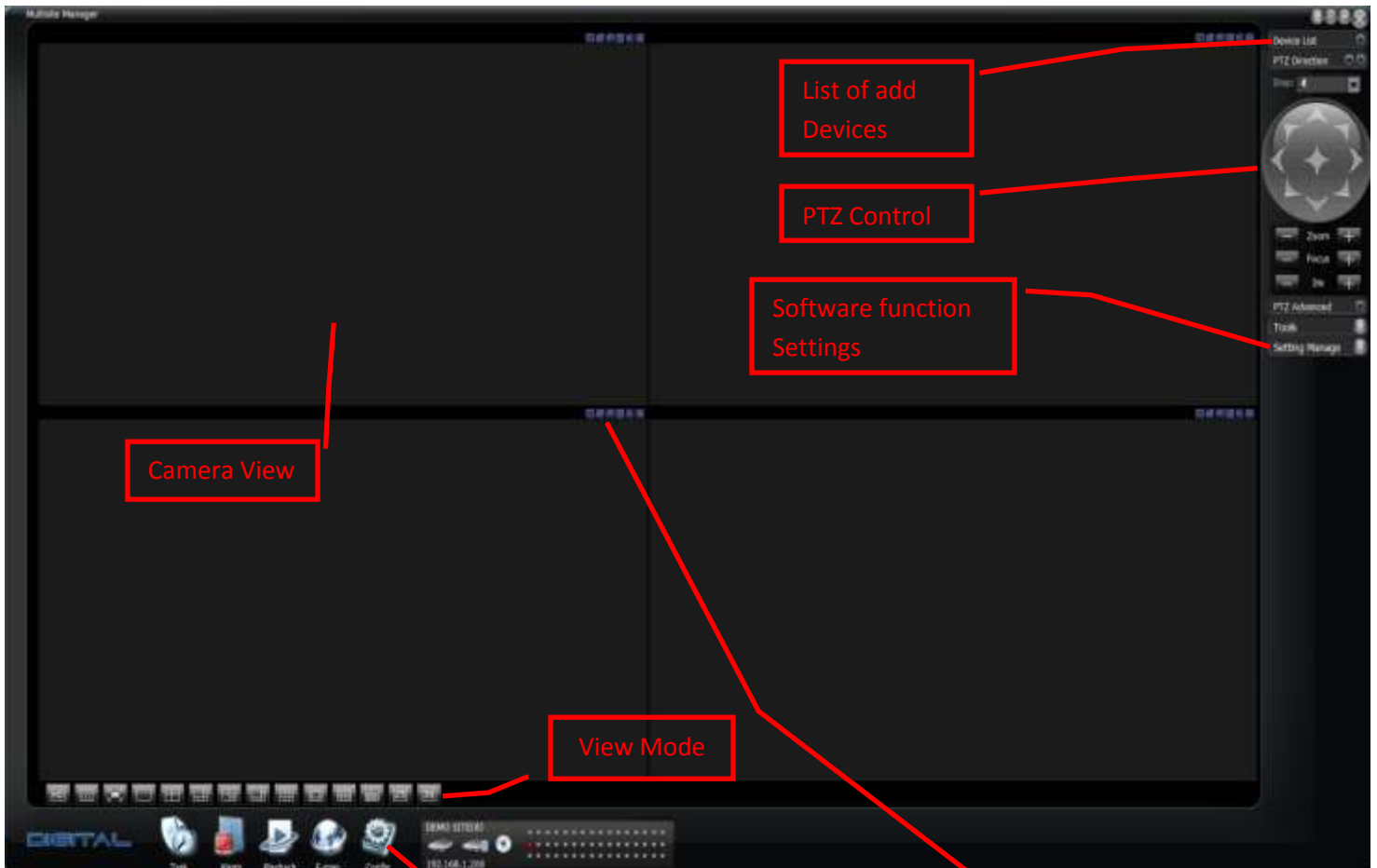
# Software Live View

1. Run the software and it will ask for a username and password

Default  
username: admin  
password: admin



2. Live view screen



Camera View

List of add  
Devices

PTZ Control

Software function  
Settings

View Mode

Software  
Config

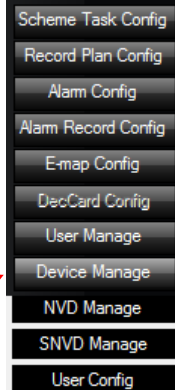
Zoom  
Mode  
Local Record  
Snap shot  
Audio  
Close video

## Adding Sites

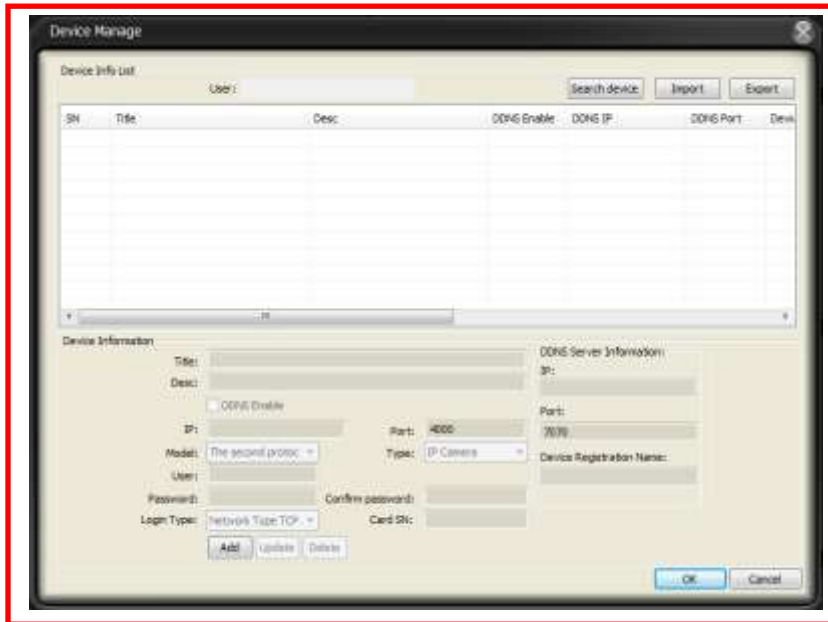
1. On Live view Click Setting Manage



### Setting Manage Menu



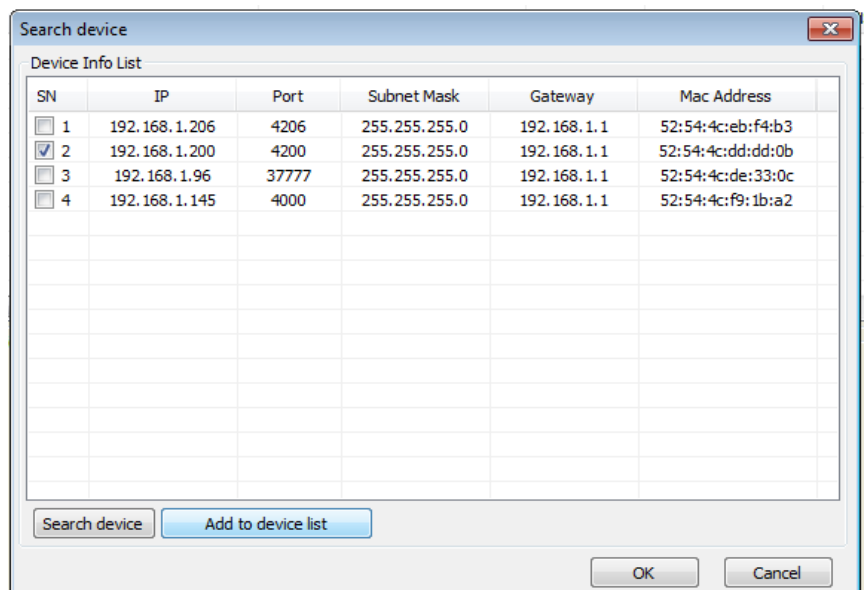
2. Setting Manage



3. Adding Devices

- a. By Search Device.

- Click **Search device**, interface shown below. Click on Search Device this will scan the **Local network** for any embedded system connected to the network.
- Put a mark on SN box, to the selected system.
- Click "Add to device List" and then click OK
- The selected system will be added to the Device Info List



b. By IP address

- Click Add bottom in Device Manage. The Device Information field can now be edited. These are the fields that need information.

**Title:** Client information

**Desc:** Client information description

**IP:** Local or Public IP address of the system. On the sample public IP is used

**Port:** TCP port of the system

**Type:** Select DVR

**User:** admin

**Password:** 1234

**Confirm Password:** 1234

The screenshot shows a 'Device Information' form with the following fields and values: Title: Demo, Desc: Demo Site, DDNS Enable: unchecked, IP: 173.239.131.84, Port: 4000, Model: The second protoc, Type: DVR, User: admin, Password: masked with dots, Confirm password: masked with dots, Login Type: Network Type TCP, Card SN: empty. On the right, 'DDNS Server Information' includes IP: empty, Port: 7070, and Device Registration Name: empty. Buttons at the bottom include Reset, Save, Update, Delete, OK, and Cancel.

- Click "Save" and then click "OK"
- Proceed to "4. Device List"

c. By DDNS

- Click Add bottom in Device Manage. The Device Information field can now be edited. These are the fields that need information.

**Title:** Client information

**Desc:** Client information description

**DDNS Enable:** marked

**DDNS Server Information:**

**IP:** 66.163.26.245 (DDNS server information)

**Port:** 7070 (DDNS server information)

**Port:** 4000 (TCP port of the system)

**Type:** Select DVR

**User:** admin

**Password:** 1234 (system password)

**Confirm Password:** 1234 (system password)

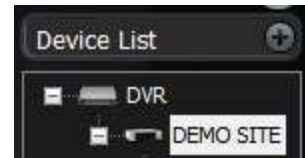
The screenshot shows the 'Device Information' form with DDNS settings. Title: Demo, Desc: Demo Site, DDNS Enable: checked, IP: empty, Port: 4000, Model: The second protoc, Type: DVR, User: admin, Password: masked with dots, Confirm password: masked with dots, Login Type: Network Type TCP, Card SN: empty. 'DDNS Server Information' includes IP: 66.163.26.245, Port: 7070, and Device Registration Name: demosite. Buttons at the bottom include Reset, Save, Update, Delete, OK, and Cancel.

d.

- Click "Save" and then click "OK"
- Proceed to "4. Device List"

#### 4. Device List

- After Adding the devices the "Device List" should be as shown
- Click on the + on icon to expand the list or show the devices and Cameras.
- Click and drag each camera to the camera view box to get live display.
- 1 box per camera




Click and drag cameras here

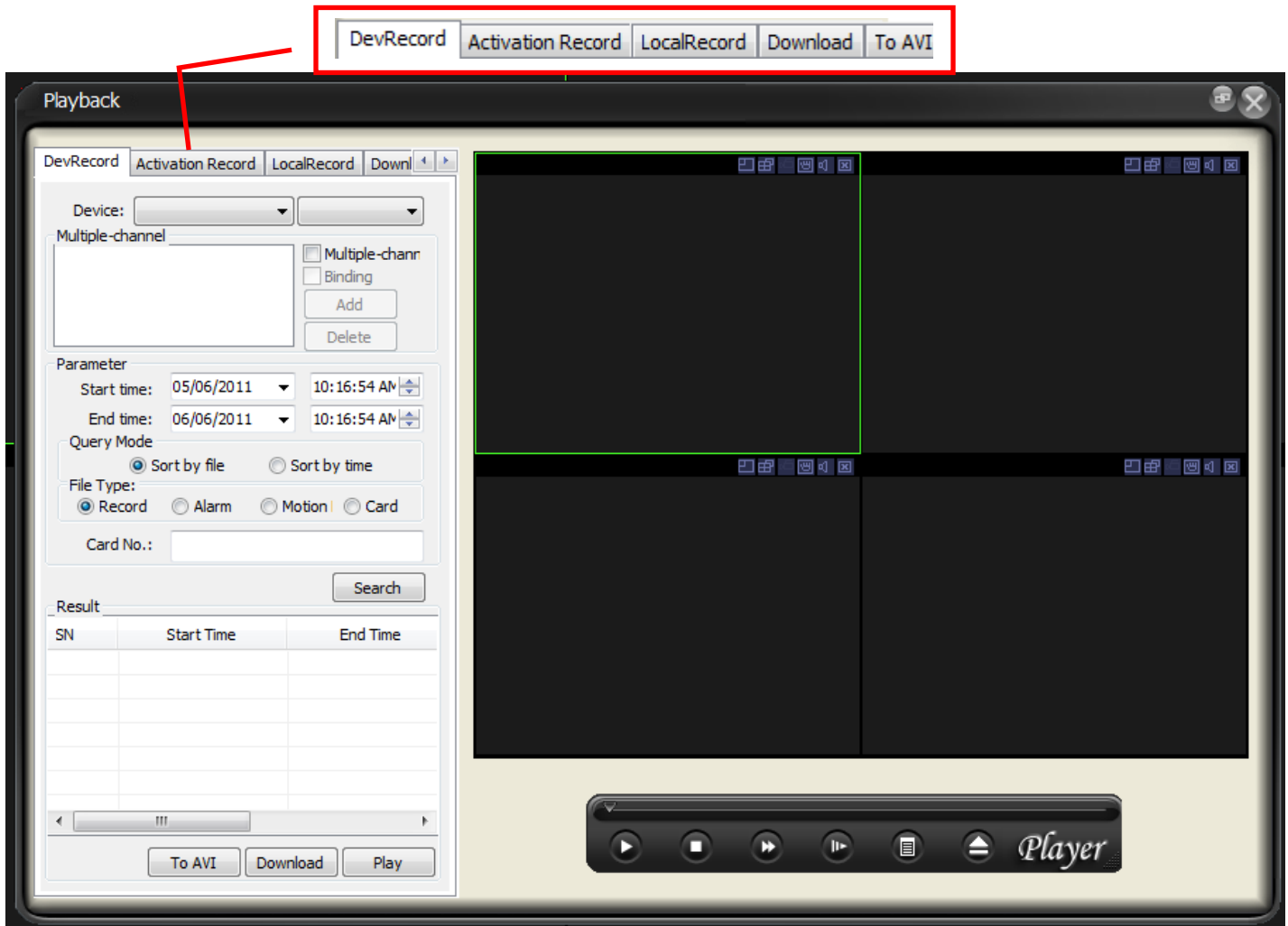
Cameras



## Search/Backup/AVI Conversion



1. On live view Click the Playback Button . Playback Windows is shown below.

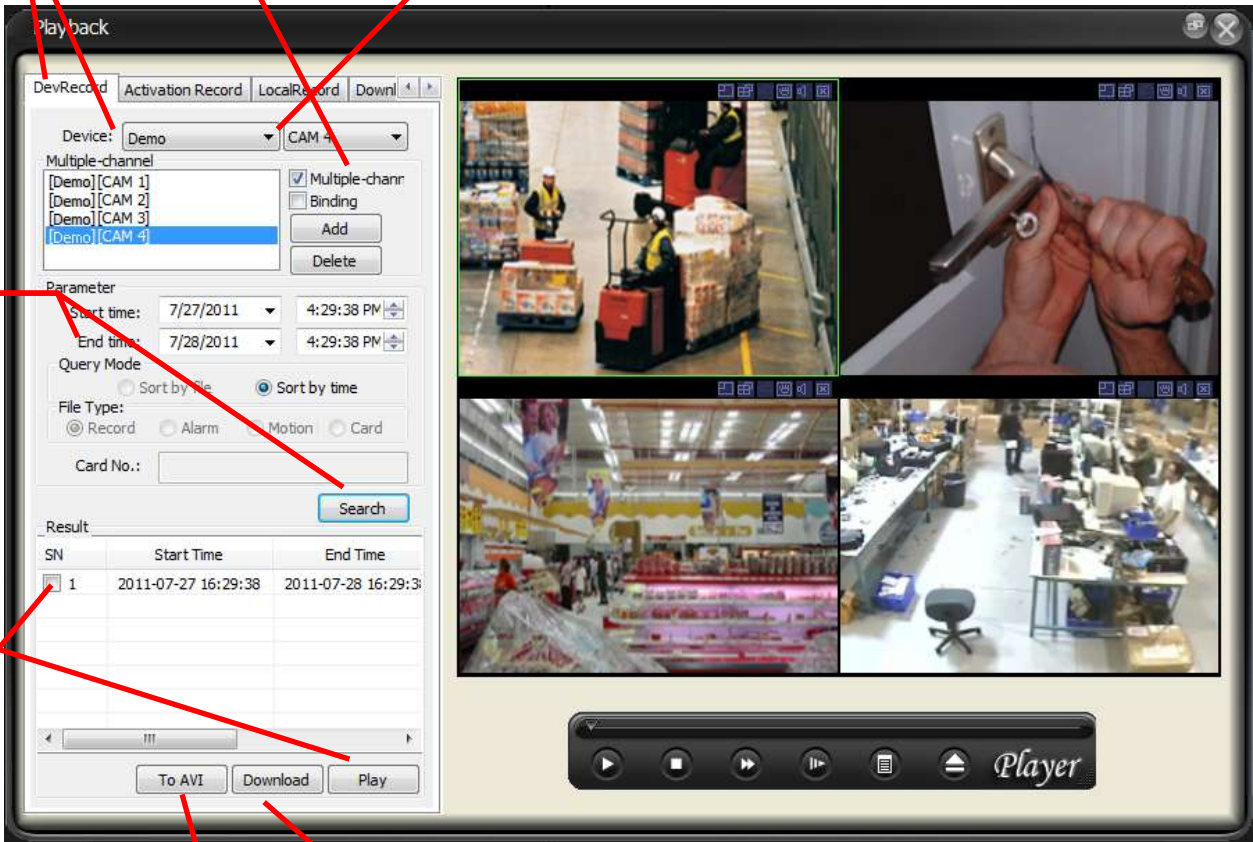


2. On the "DevRecord" tab. Select the Name on the "Device" drop down and also select the camera number.
3. Set the parameters for Start time, End time and Query Mode. Then click the Search bottom.
4. To play multiple channel. Mark the option for Multiple-channel.
5. Select the name on the "Device" drop down and also select the camera number, then click the add button.
6. Repeat the Step 4 until the maximum number of camera is added.
  - Note: The multiple-channel playback availability is depended on the system. Some system can only do 1 search or 2 channel search. And the Query Mode will only Sort by time.
7. Set the parameters for Start time and End time. Then click the Search bottom.
8. Put a checkmark on the video and then click play. This will start to play the video

2

4

5



3&7

8

When AVI is click it will start the AVI conversion of the selected video

When Download is click it will start the download of the selected video default path would be C:\PSS\Record

LocalRecord Download To AVI

SN	Percentage	DstFileName
<input type="checkbox"/> 1	0%[Converting now]	C:\Users\Hydra\Desk
<input type="checkbox"/> 2	Waiting for processing	C:\Users\Hydra\Desl
<input type="checkbox"/> 3	Waiting for processing	C:\Users\Hydra\Desl
<input type="checkbox"/> 4	Waiting for processing	C:\Users\Hydra\Desl

Activation Record LocalRecord Download To AVI

Download List

SN	Channel	Percen...	Start
<input type="checkbox"/> 1	[DEMO SITE][...	0%	2011-6-0!
<input type="checkbox"/> 2	[DEMO SITE][...		2011-6-0!
<input type="checkbox"/> 3	[DEMO SITE][...		2011-6-0!
<input type="checkbox"/> 4	[DEMO SITE][...		2011-6-0!

## Start-up View

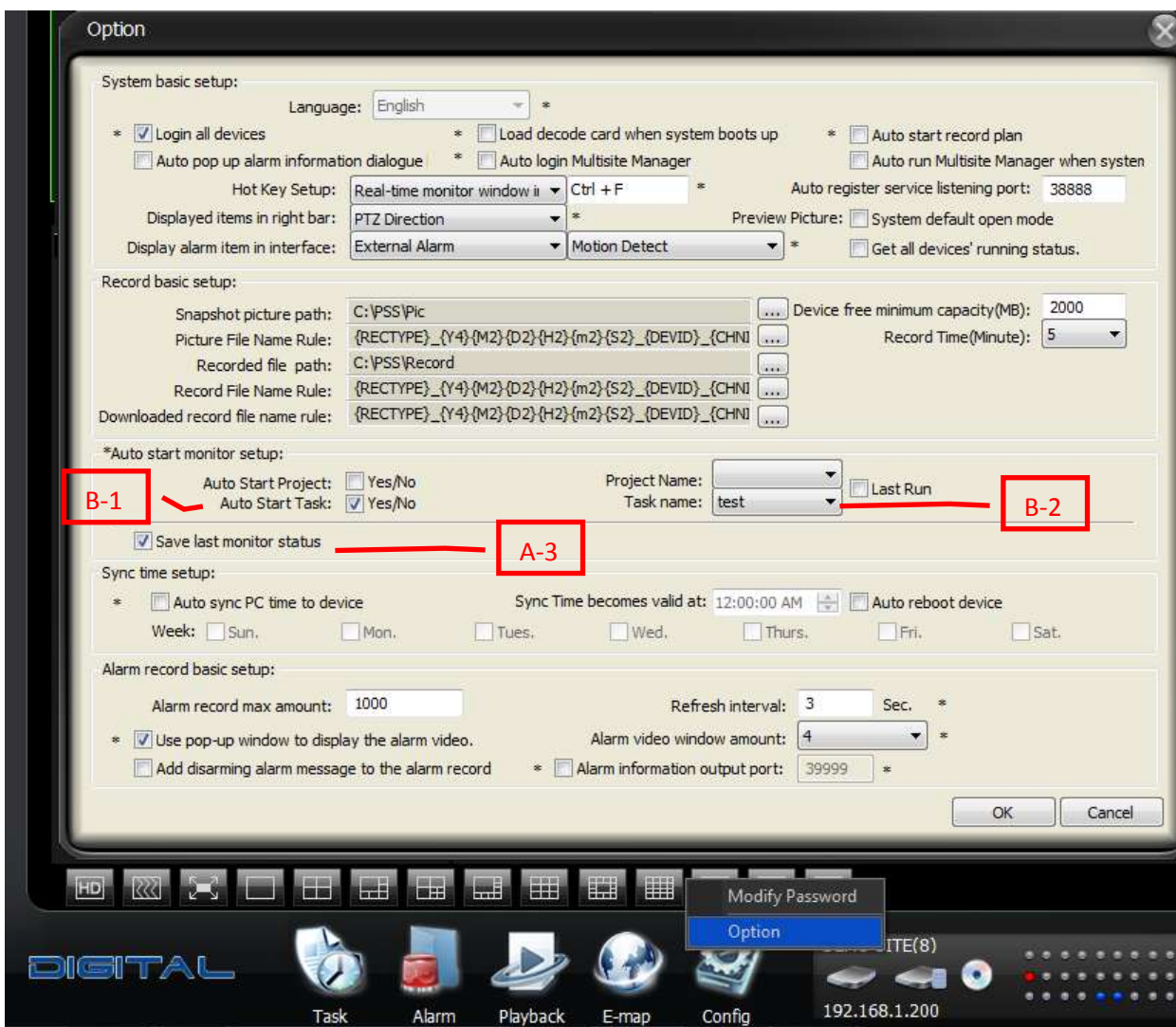
This section will show how to start the Multisite Manager and automatically connect to the different sites or previously monitored sites.

### A. Connect to Previously Monitored Sites.

1. Click on Config
2. Click Option
3. Put a check mark on "Save last monitor status." And Click OK Everytime the software starts it will remember that last device and cameras connected

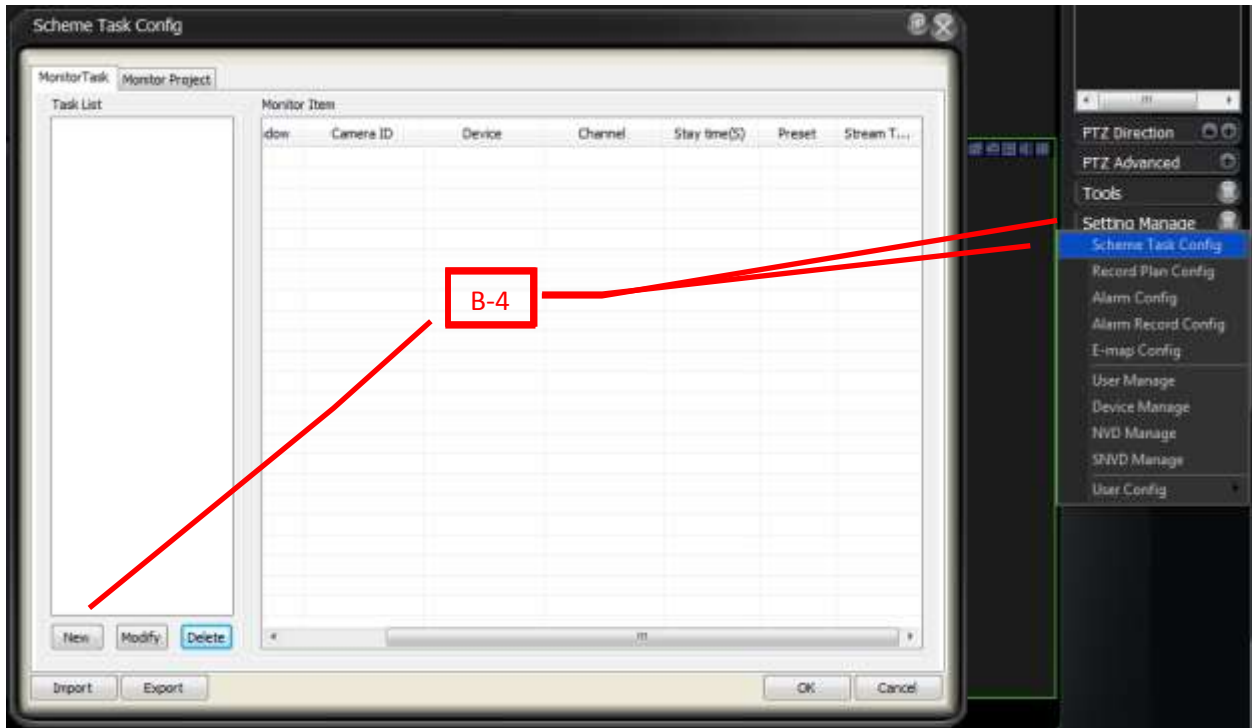
### B. Via Task

1. Enable Auto Start Task
2. Select the Task Name
3. Click Ok





4. Select Setting Manage, Select Scheme Task Config and under the Monitor Task tab select New



5. On the Task Edit, Fill in the Task  
 - Task Name: (client selection)  
 - Window:

(camera view mode  
 1,4,6,7,8,9,13,16,20,25,36)

6. On the "Device List," connect and expand the device.

7. Under Monitor Item select the Window

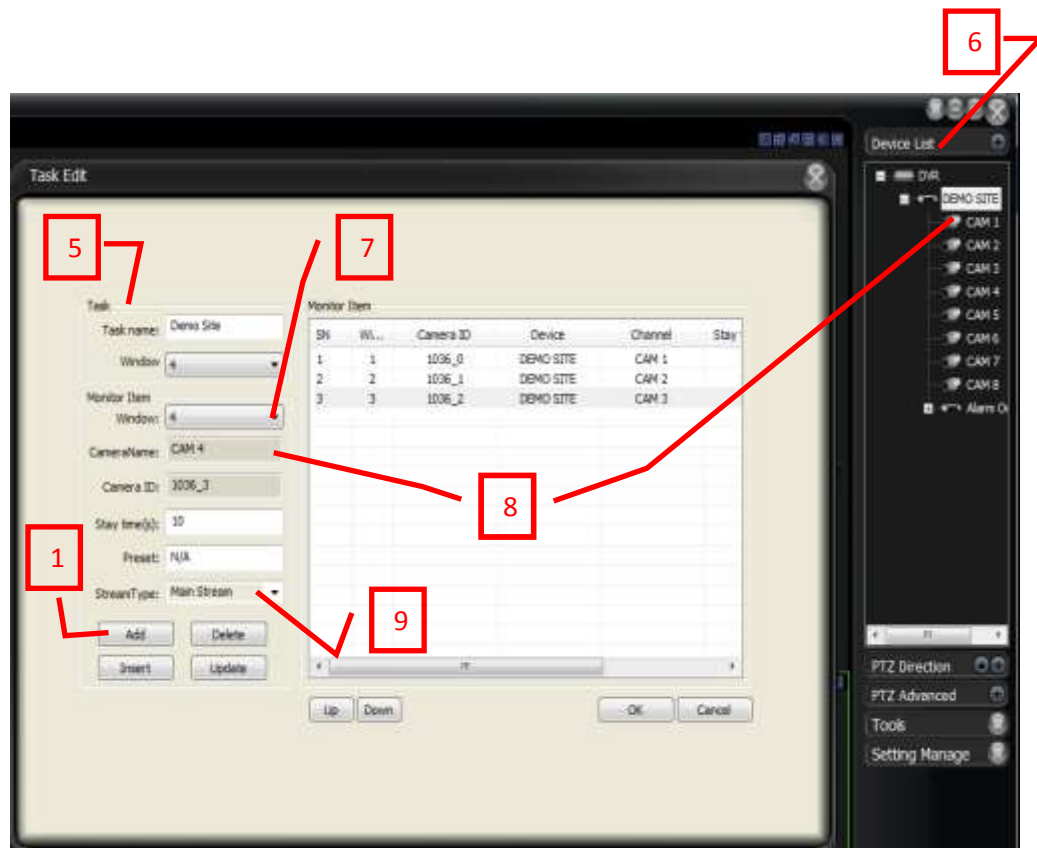
8. Under "Device List," click and drag the "Cam#" to the "CameraName"

9. Select the StreamType: (System dependent)

10. Click Add

11. Repeat step 7 to 10 until the number of desired connections is met.

12. Click Ok on "Task Edit" and Click OK again on "Task Config" to save and exit the settings.



Each time the software starts the selected task will start.